

Nov. 2020

## PW-4032 Pulse Width Limiter

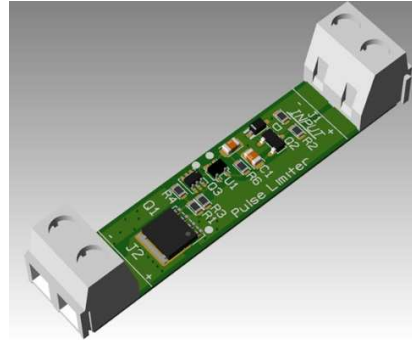
The Pulse Width Limiter Module is designed for applications that require to limit the time of high current flow into a load. The module is connected serially between the power source and the load. It detects the voltage source applied on the load and disconnects the load after the pre-set time limit as in table below. The load remains disconnected until power source is switched off for 1 second at least.

### Application

- ▶ Limit a pre-set time a voltage is applied on a load

### Main Features

- ▶ Input connector: Terminal Blocks
- ▶ Output connector: Terminal Blocks
- ▶ Input power source: 8-40VDC
- ▶ Current drawn from source < 15mA
- ▶ Maximum through current: 32A
- ▶ Operating Temperature: -40° ÷ +85°
- ▶ Dimensions: 48x10mm±0.5mm
- ▶ Available Pulse width [msec]:  
20, 50, 75, 100, 150, 200, 250, 300, 350, 400, 450, 500
- ▶ Pulse width accuracy: ±10% up to 100msec, ±5% above

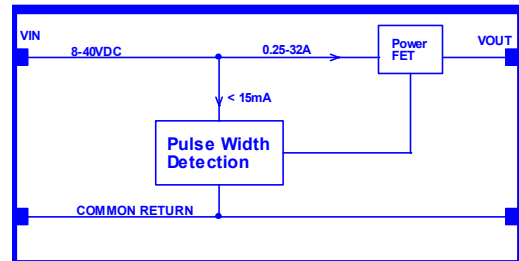


### Ordering Info

Product Family	-	VINmax [V]	Currentmax [A]	-	Pulse Width	Quad Module
PW	-	40	32	-	3 digits [msec]	-4

Available P/N	Pulse Width	Accuracy
PW-4032-020	20msec	±10%
PW-4032-050	50msec	±10%
PW-4032-075	75msec	±10%
PW-4032-100	100msec	±5%
PW-4032-150	150msec	±5%
PW-4032-200	200msec	±5%
PW-4032-250	250msec	±5%
PW-4032-300	300msec	±5%
PW-4032-350	350msec	±5%
PW-4032-400	400msec	±5%
PW-4032-450	450msec	±5%
PW-4032-500	500msec	±5%

### Block Diagram



\* Other Pulse Width available by request. Minimum order 20pcs



Adcom Electronic Design Center  
6 Yad-Harutzim St., Kfar-Saba  
Israel 4464103  
[WWW.ADCOM.CO.IL](http://WWW.ADCOM.CO.IL)